



APMA

CC11(CCWX) SERIES RF CONNECTOR

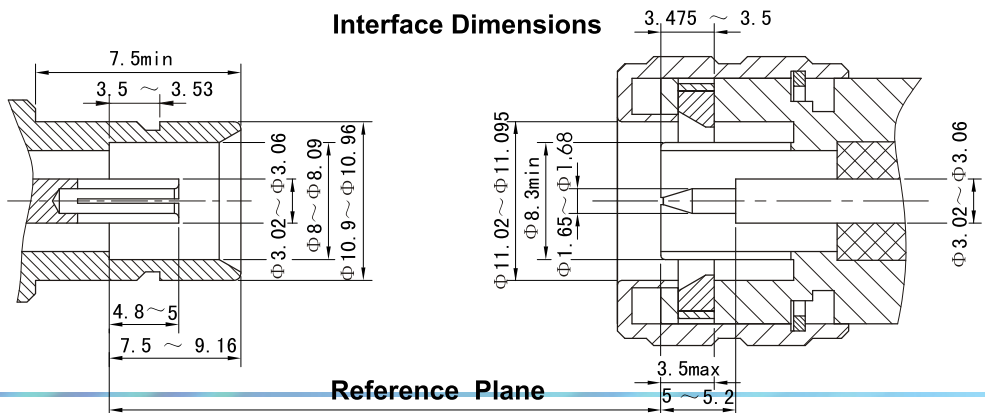


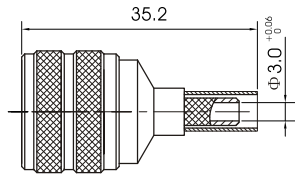
CC11 Series is a kind of push in and self-lock connector, with better stability and well-connected plus good performance in mechanical as well. It is widely used into the field of military weapon system. CCWX is the updated form from CC11, which can be changable with CC11. It has better stability for connecting .

Key performance:	Material:
Characteristic Impedance : 50 Ω	Center contacts:
Frequency range : 0~6GHz	Male---brass, gold plated.
Contact resistance :	Female---phosphor bronze, gold plated
Center conductor: ≤1.5m Ω	Bodies and other metal parts:
Out conductor : ≤0.2m Ω	Brass, Nickel Plated
Insulation resistance : ≥5000M Ω	Stainless Steel, passivated
Insulator voltage withstanding : 1500V	Insulators: PTFE
VSWR:	
Straight: ≤1.3	
Right Angle : ≤1.4	
Connector durability : 500 cycles	

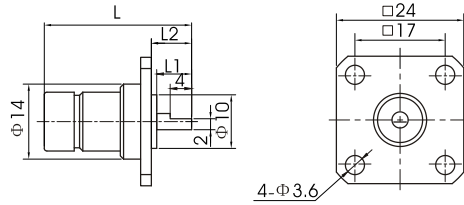
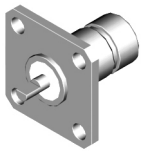
Applicable standard: J.Q/FD20002-09

Interface Dimensions

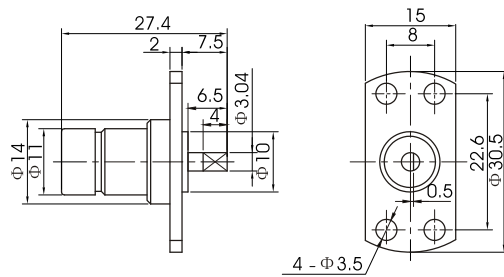
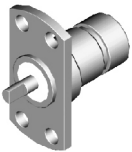




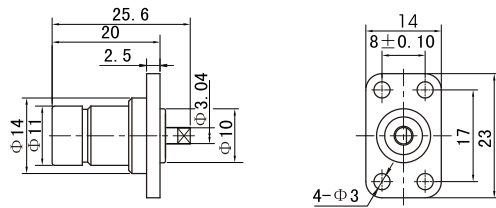
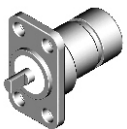
Type	part number	suitable cable	Note
CC11-J5YAG	1714-6501	5A	



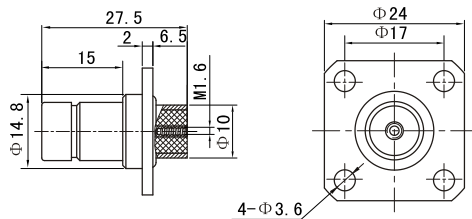
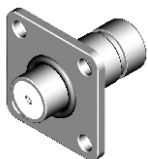
Type	part number	L	L1	L2	Note
CC11-KFD-1	1721-0001	27.4	6.5	7.5	
CC11-KFD-2	1721-0002	28.5	7.5	8.5	



Type	part number	Note
CC11-KFD-3	1721-0003	



Type	part number	Note
CC11-KFD12	1721-0004	



Type	part number	Note
CC11-KFD3	1721-0005	