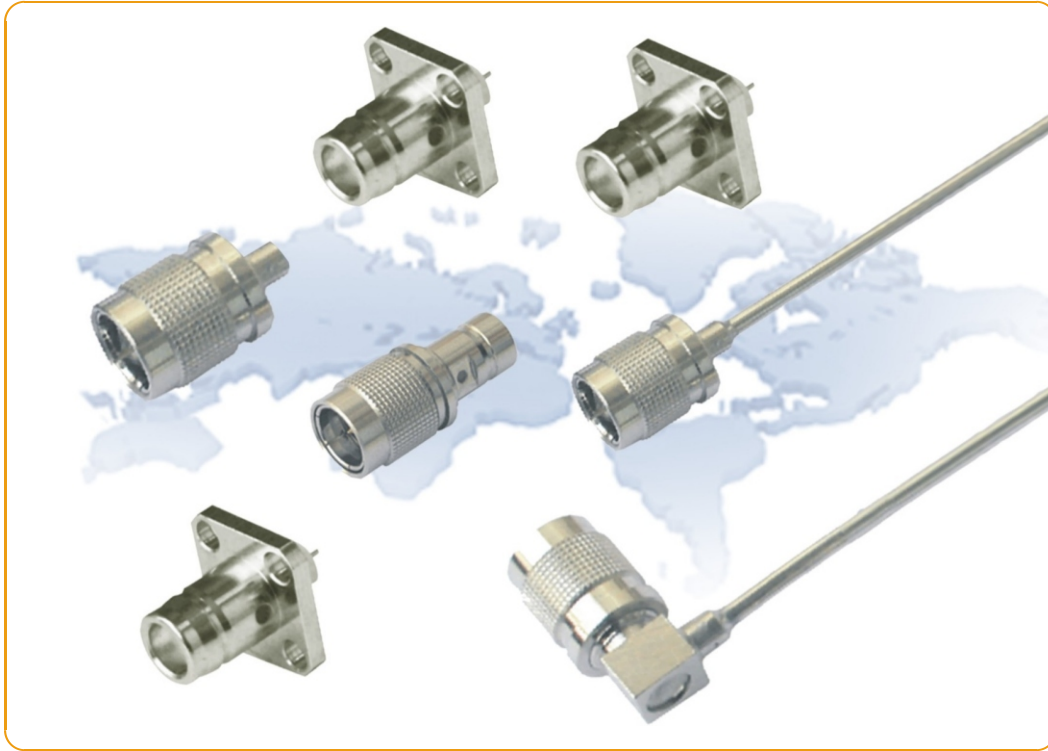




## CQA SERIES RF CONNECTOR

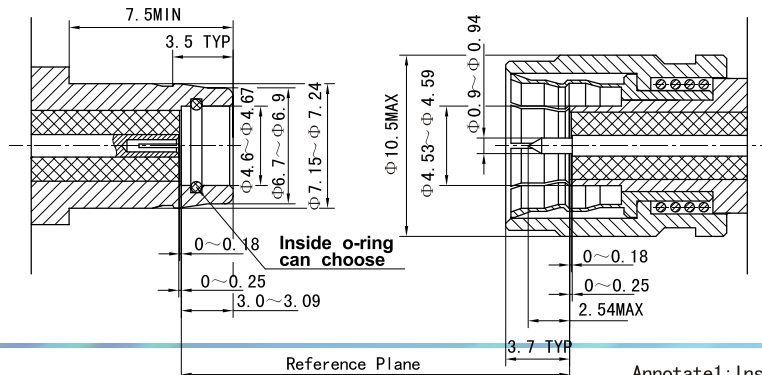


CQA is a miniature push-pull, interlocking R.F connector, designed based on SMA. When using forstar's special coupling nut, CQA can interchange with SMA and K connectors; the center contact OD of CQA is quite similar with SMA's. CQA has the advantage of quick-action, better anti-vibration, and good electronic and mechanical performance. Applications are in electronic equipment, communication system, etc.

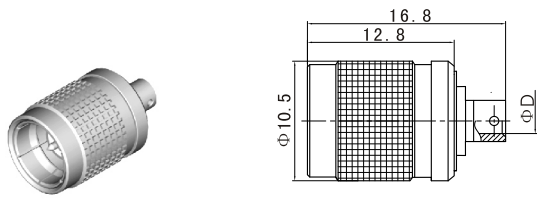
Key performance:	Material:
Characteristic impedance: 50 Ω	Center conductor:
Frequency range: 0~18.0GHz	Male—brass, gold plated
Contact resistance:	Female—beryllium copper, gold plated
Center conductor ≤ 3mΩ	Outer conductor:
outer conductor: ≤ 2mΩ	beryllium copper/phosphor bronze, nickel plated/Gold plated
Insulator resistance: ≥ 5000MΩ	Bodies & other metal parts:
insulator voltage withstanding: 1000 V	brass, nickel plated
VSWR:	Insulator: PTFE
1. 25MAX (0~12.4GHz)	Crimp ferrule—brass, nickel plated
1. 35MAX (0~18.0GHz)	O-ring—silicone rubber
Durability: 200cycles	

**Applicable standard: FD/Q2003-01**

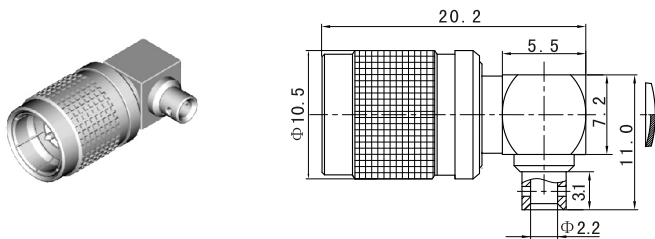
Dimensions of interface



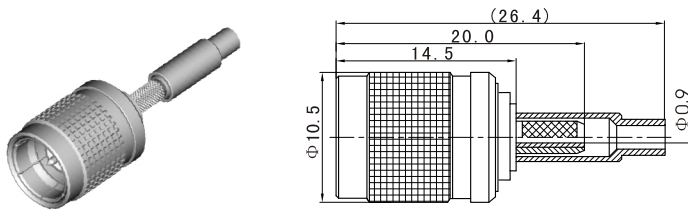
Annotate1: Inside o-ring can choose



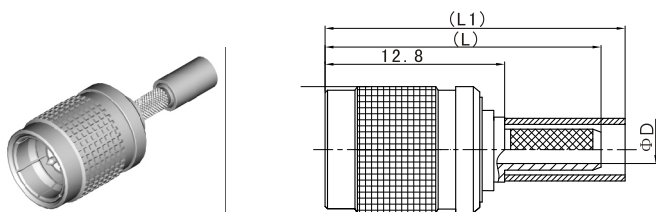
Type	D	Suitable Cable	Note
CQA-JB2	$\Phi 2.2$	SFT-50-2-1 RG405/U	
CQA-JB3	$\Phi 3.6$	SFT-50-3-1 RG402/U	



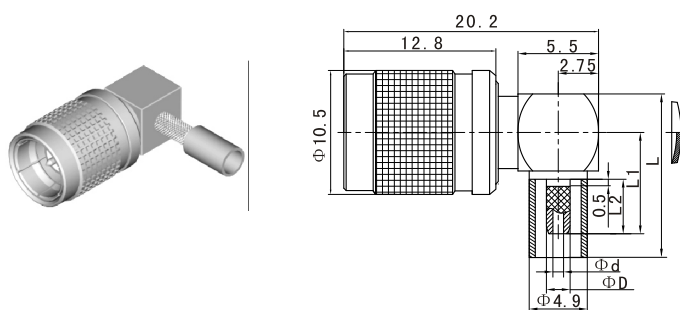
Type	Suitable Cable	Note
CQA-JWB2	SFT-50-2-1 RG405/U	



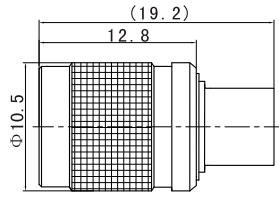
Type	Suitable Cable	Note
CQA-J2	SFF-50-1 RG178/U	



Type	L	L1	D	Suitable Cable	Note
CQA-J3	20.0	22.0	$\Phi 1.6$	SFF-50-1.5-1 RG316/U	
CQA-J4	22.0	24.0	$\Phi 2.3$	SFF-50-2-1	
CQA-J5	24.0	29.0	$\Phi 3.1$	SFF-50-3-1 RG141/U	



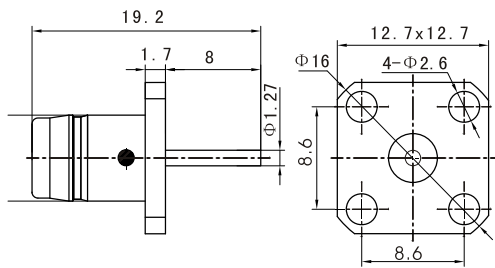
Type	L	L1	L2	D	d	Suitable Cable	Note
CQA-JW2	13.2	8.55	4.6	$\Phi 2.0$	$\Phi 0.9$	SFF-50-1 RG178/U	6.0
CQA-JW3	15.3	9.75	5.7	$\Phi 2.6$	$\Phi 1.6$	SFF-50-1.5-1 RG316/U	8.0
CQA-JW4	17.4	12.15	8.0	$\Phi 3.4$	$\Phi 2.3$	SFF-50-2-1	10.0
CQA-JW5	22.4	14.15	10.0	$\Phi 4.4$	$\Phi 3.0$	SFF-50-3-1 RG141/U	15.0



Type

Note

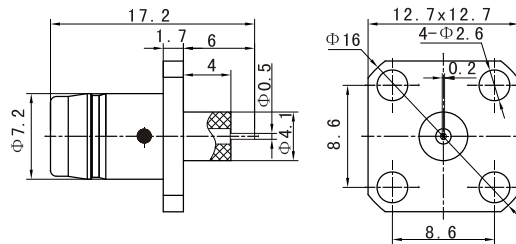
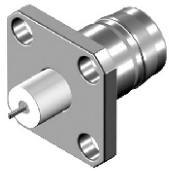
CQA-50JR



Type

Note

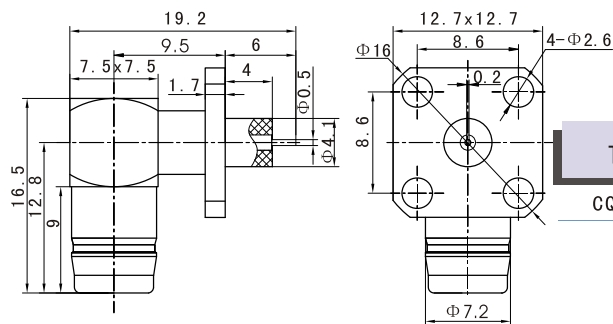
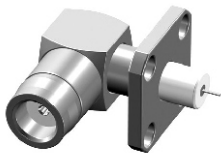
CQA-KFD



Type

Note

CQA-KFD3A



Type

Note

CQA-KWFD2