



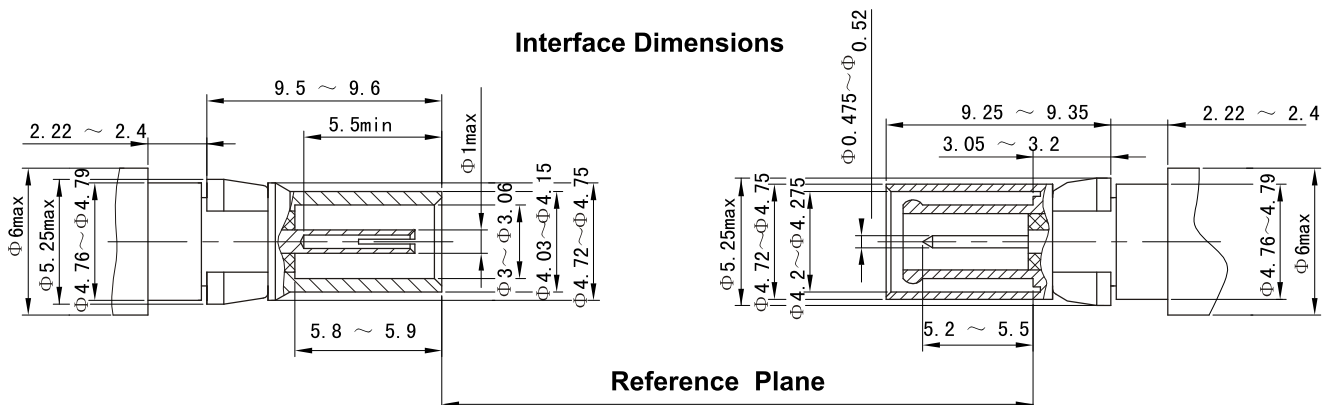
DSB SERIES RF CONNECTOR

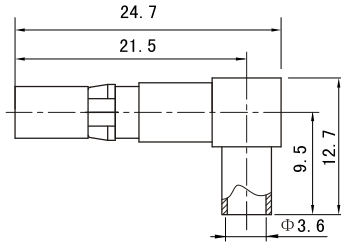
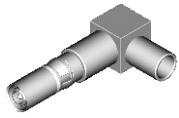


Series DSB RF coaxial connector is mainly used in series D-SUB connector mix assembled in high/low frequency, and is suitable to assemble with 3~5mm flexible cable.

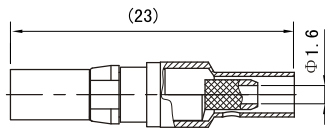
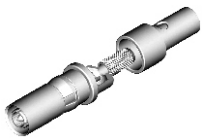
Key performance:	Material:
Characteristic Impedance : 50 Ω	Center contacts:
Frequency range : 0~1GHz	Male---brass, gold plated.
Contact resistance :	Female---beryllium copper, gold plated
Center conductor ≤ 6.0m Ω	Bodies and other metal parts:
Out conductor ≤ 2.0m Ω	brass, gold plated
Insulation resistance : ≥500M Ω	Insulators: PTFE
Insulator voltage withstanding : 500V	Crimp ferrule: copper, nickel plated.
VSWR: ≤ 1.30	Gasket and seal rings: silicone rubber
Connector durability : 500 cycles	

Applicable standard: GJB681A (MIL-C-24308) DIN 41612

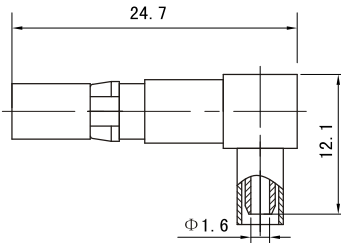
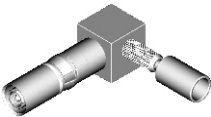




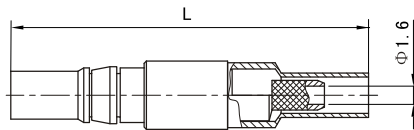
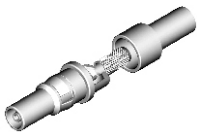
Type	part number	suitable cable	Note
DSB-JWB3	1830-6601	B3	



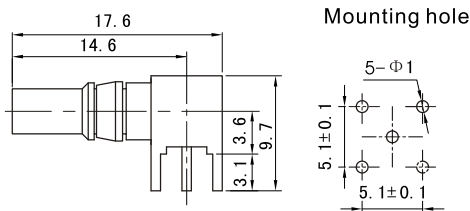
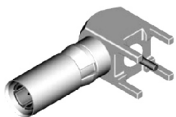
Type	part number	suitable cable	Note
DSB-J3A	1810-6500	3	



Type	part number	suitable cable	Note
DSB-JW3A	1830-6500	3	



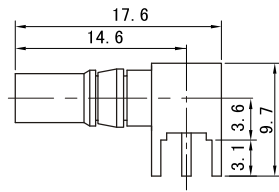
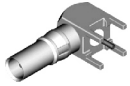
Type	part number	suitable cable	L	Note
DSB-K3Y	1820-6500	3	31.4	
DSB-K3YA	1820-6501	3	26.3	



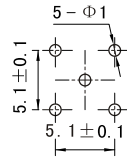
Type	part number	Note
DSB-JWHD	1830-5800	



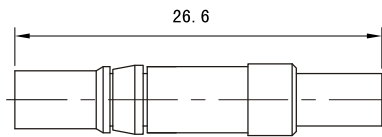
APMA



Mounting hole



Type	part number	Note
DSB-KWHD	1840-5800	



Type	part number	Note
DSB-KK	1801-6900	