

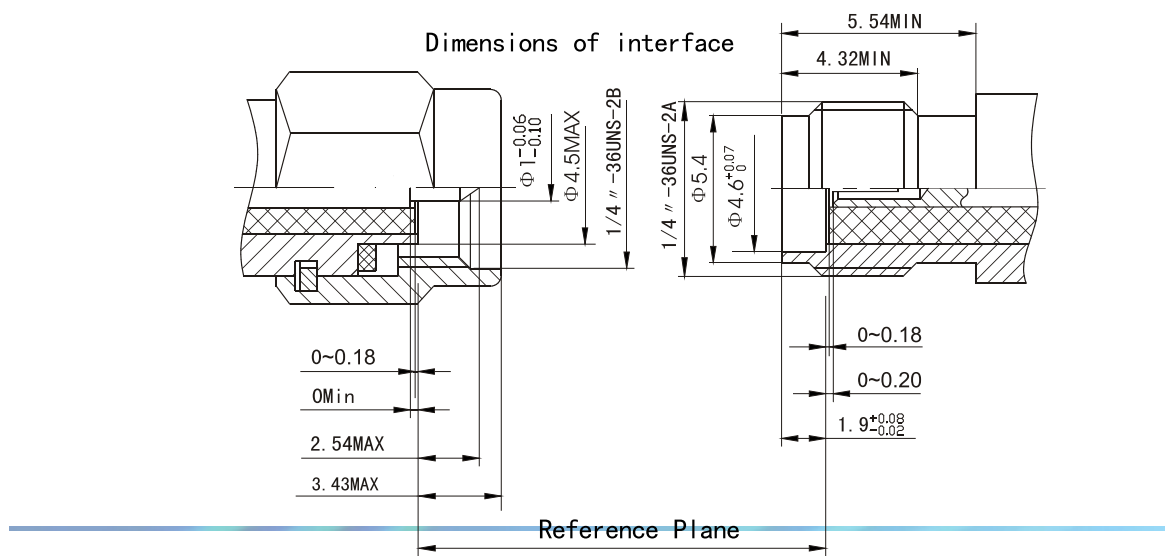
ISMA SERIES RF CONNECTOR



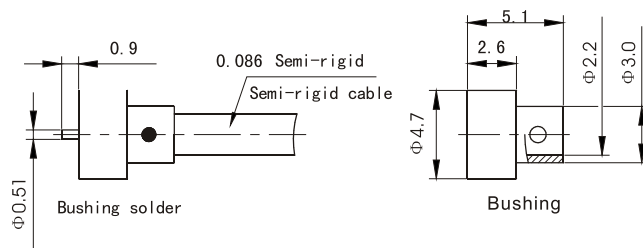
ISMA type RF connector is a kind of improved SMA, and can interchange with SMA type. The frequency can be used up to 27GHz. It has the advantage of small volume, light and reliable application.

Key performance:	Material:
Characteristic impedance: 50 Ω	Center contact:
Frequency range: 0~27.0 GHz	Male—Brass, gold plated
contact resistance:	Female—beryllium copper, gold plated
center conductor: $\leq 3.0 \text{ m}\Omega$	Body and other metal parts:
outer conductor: $\leq 2.0 \text{ m}\Omega$	Stainless steel passivated,
Insulator resistance: $\geq 5000 \text{ M}\Omega$	Brass gold plated
insulator voltage withstanding: 1000 V	Insulator: PTFE
VSWR: DC~18GHz, ≤ 1.10 ;	
18GHz~27GHz, ≤ 1.15 ;	

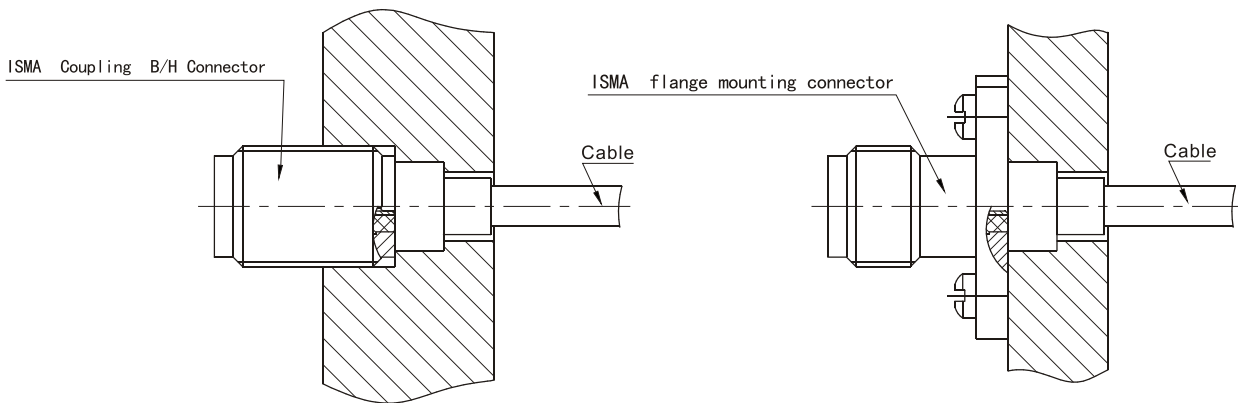
Applicable standard: Q/F20234



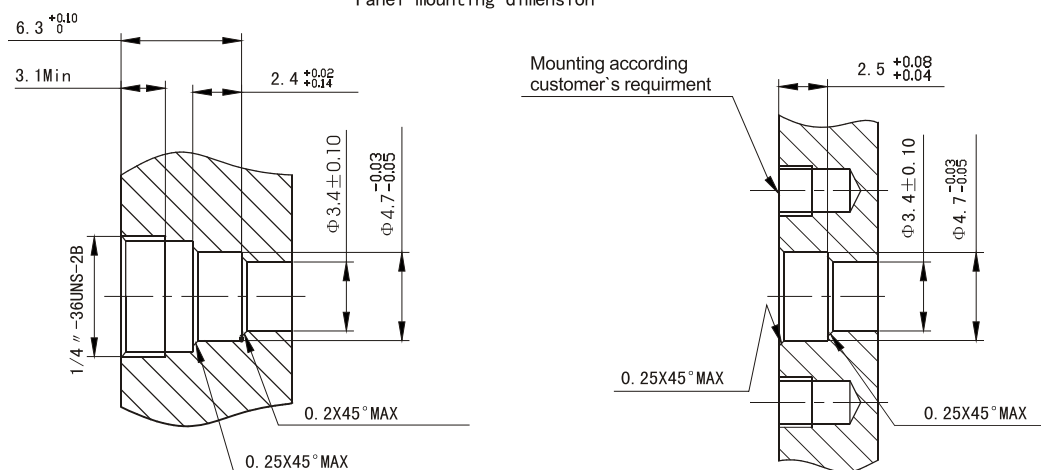
ISMA type RF connector can totally interchange with SMA , it's a kind of improved SMA type, the frequency can be used to 27Ghz. the panel mounting type can be easily disconnecting , application in apparatus .Take semi-rigid cable for example : traditional construction is :solder the rear connector directly onto the cable or use the adaptor, have to open the apparatus when changing the broken connectors ;the repair cost will be very high and may hurt the apparatus when open it frequently ; but the improved connector , just need solder the bushing on to the cable ,take the cable contact as the center contact to connect with the panel mounting connector ,this does not need to open the apparatus when the connectors broken , just remove the connector is ok. This type not only decrease the cost but also reduce the hurt to apparatus .



C/A panel mounting drawing

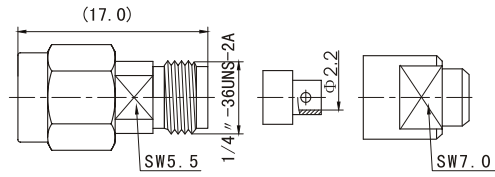
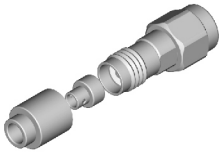


Panel mounting dimension

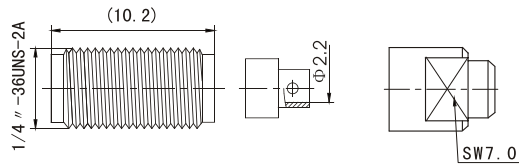
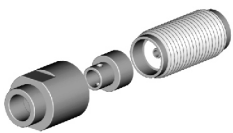




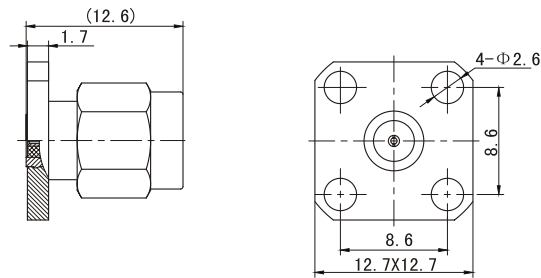
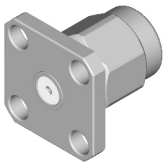
APMA



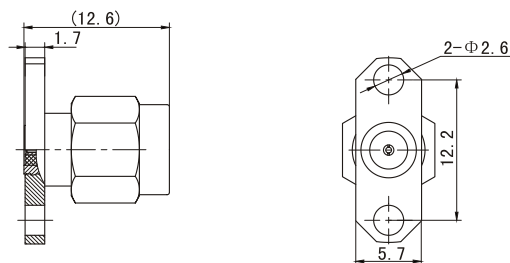
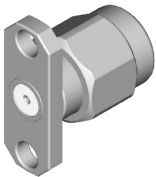
Type	Suitable Cable	Note
ISMA-JB2G	RG405, SFT50-2-1	



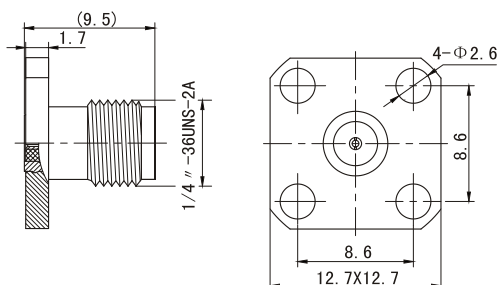
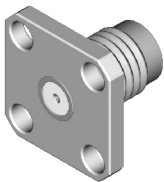
Type	Suitable Cable	Note
ISMA-KB2G	RG405, SFT50-2-1	



Type	Note
ISMA-JFD1G	
ISMA-JFD3G	



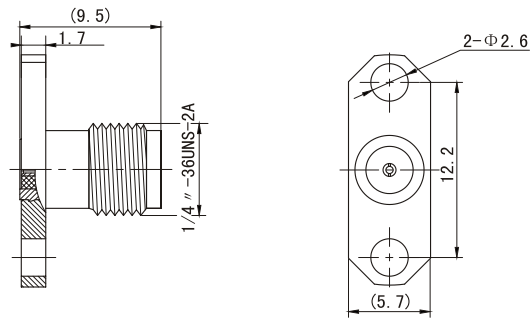
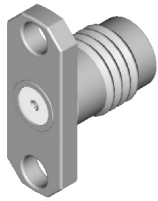
Type	Note
ISMA-JFD1AG	
ISMA-JFD3AG	
ISMA-JFD4AG	



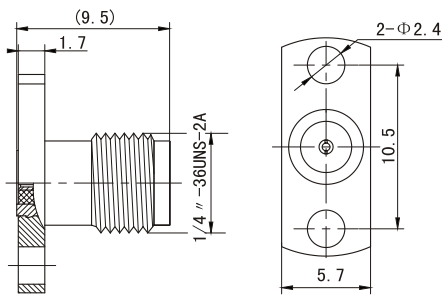
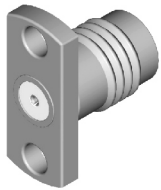
Type	Note
ISMA-KFD1G	
ISMA-KFD3G	



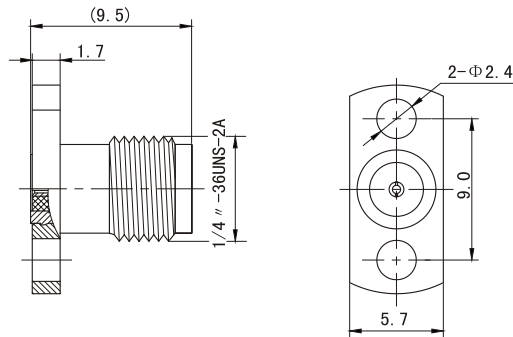
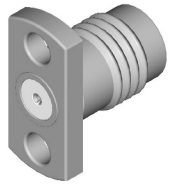
APMA



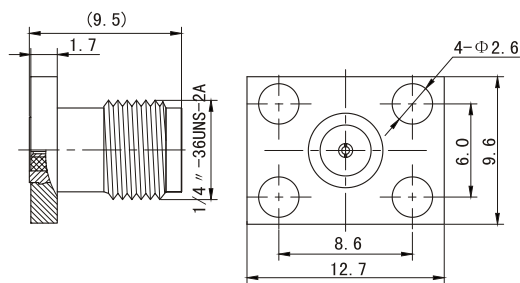
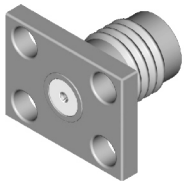
Type	Note
ISMA-KFD1AG	
ISMA-KFD3AG	
ISMA-KFD4AG	



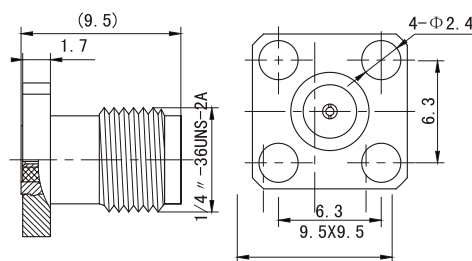
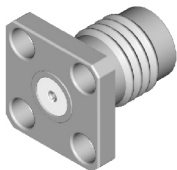
Type	Note
ISMA-KFD1BG	
ISMA-KFD3BG	



Type	Note
ISMA-KFD1CG	
ISMA-KFD2CG	
ISMA-KFD3CG	
ISMA-KFD4CG	



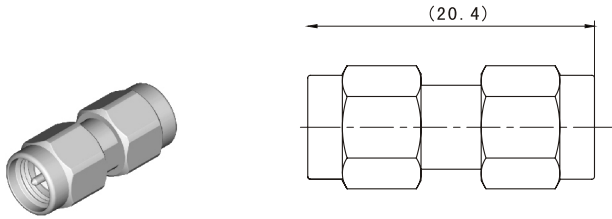
Type	Note
ISMA-KFD1DG	
ISMA-KFD4DG	



Type	Note
ISMA-KFD1EG	
ISMA-KFD2EG	
ISMA-KFD3EG	



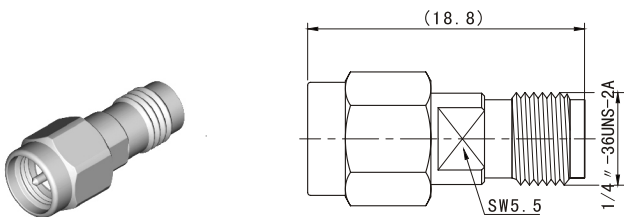
APMA



Type

Note

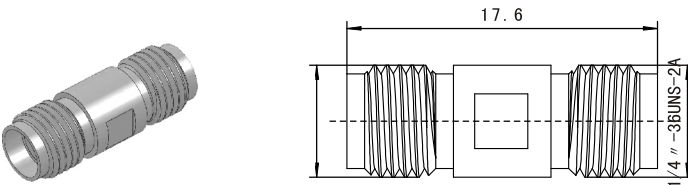
I SMA-JJG



Type

Note

I SMA-JKG



Type

Note

I SMA-KK