



## STWX8 SERIES RF CONNECTOR

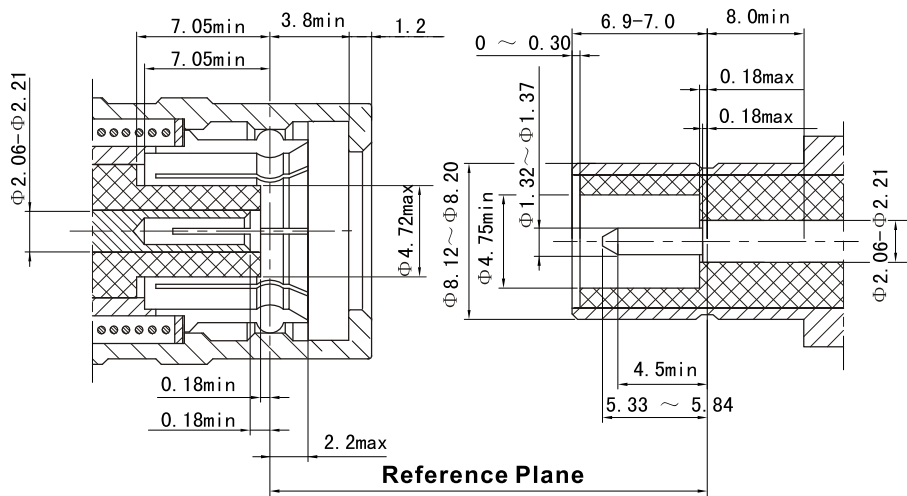


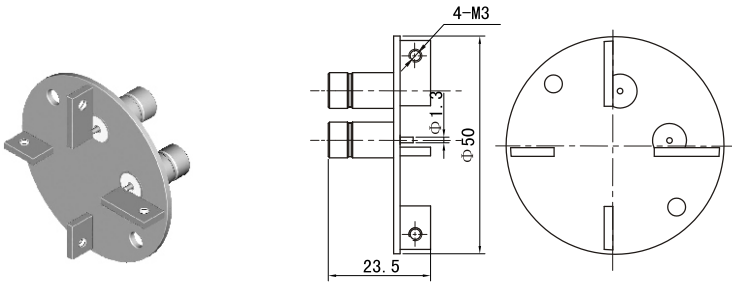
STWX8 series, independently designed by forstar, are miniature push-pull self-latching style connectors with reliable connection and good anti-vibration performance.

Key Performance:	Material:
Characteristic Impedance :50 Ω	Center Contacts
Frequency Range :DC~4GHz	Male---brass, gold plated
Contact Resistance :	Female---beryllium copper ,gold plated
Contact Resistance : ≤2.0m Ω	Bodies and other metal parts:
Center Conductor : ≤1.0m Ω	Brass, gold or nickel plated
Insulation Resistance : 5000M Ω	Insulators :PTFE
Insulator Voltage Withstanding:1500V	Crimp ferrule :Copper ,nickel plated
VSWR: ≤1.30	
Connector durability: 500cycles	

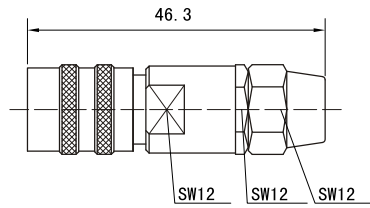
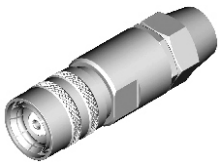
**Applicable standard: IEC60681-38**

### Interface Dimension

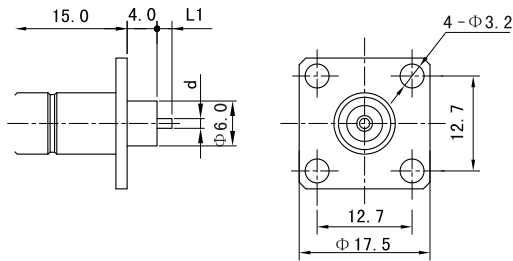
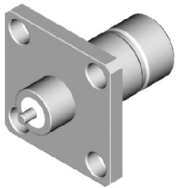




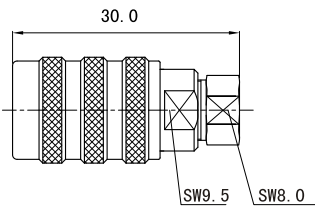
Type	Part number	Note
STWX8-JJFD	2711-1901	



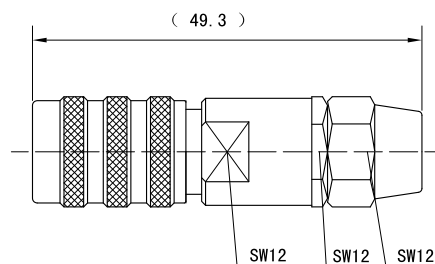
Type	Part number	Suitable Cable	Note
STWX8-K501	2721-6701	501	



Type	L1	d	Note
STWX8-JFD	2.5	Φ1.0	



Type	Suitable Cable	Note
STWX8-K235	LL235	



Type	Suitable Cable	Note
STWX8-K501G	FSJ1-50A (HELIX ANDREW)	