

SC/DSC Series Optical Fiber Connector & Adapter

Description

- Push-pull design, quick connection and removal
- Standard plastic part, good interchangeability
- Axial locking design for reliable connection
- Ceramic ferrule, PC, UPC & APC polishing
- Available to OFNR and LSZH cable
- Cable O.D.: $\varphi 0.9$, $\varphi 2$, $\varphi 3$
- Simplex /Double connector and adapter
- Ceramic sleeve, low insertion loss
- Applicable standard: YD/T1272.3, IEC61754-4

Applications

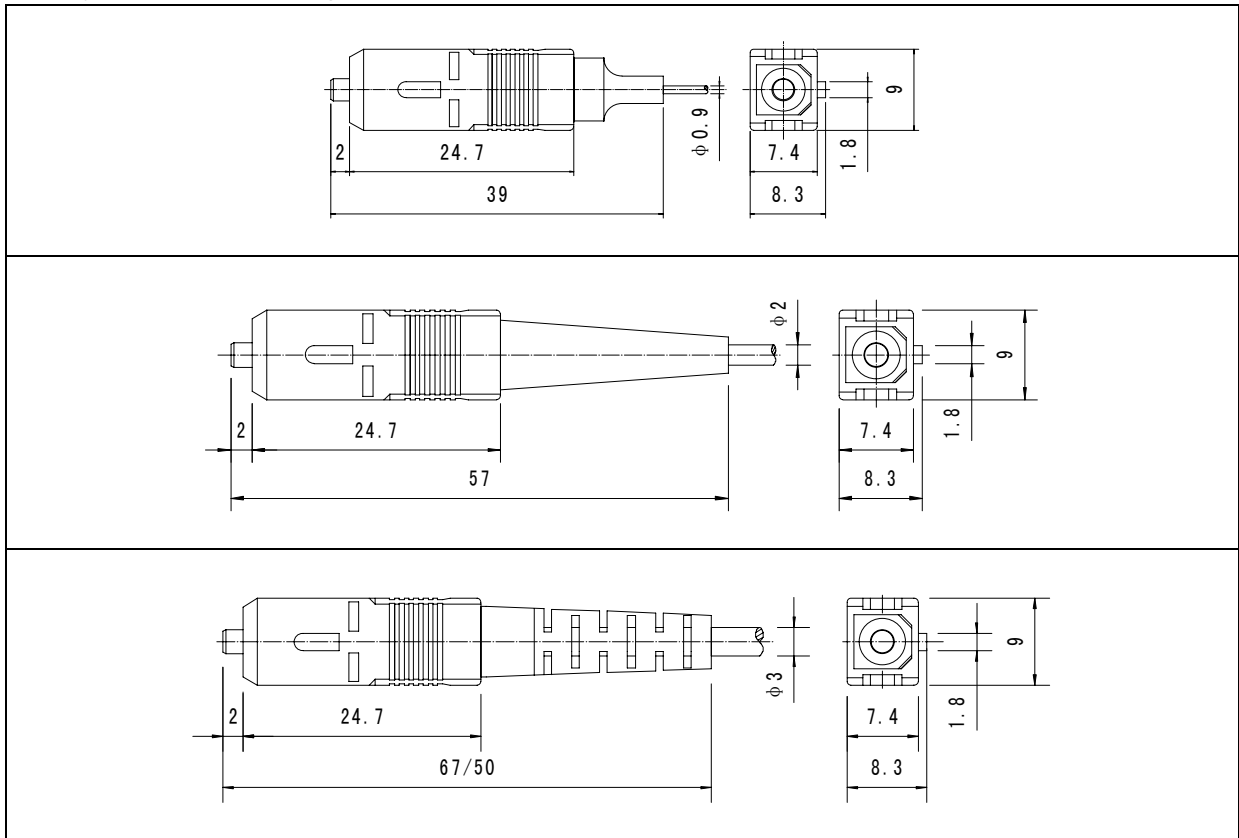
- Optical fiber communication networks
- Optical CATV
- Optical LAN

Performance

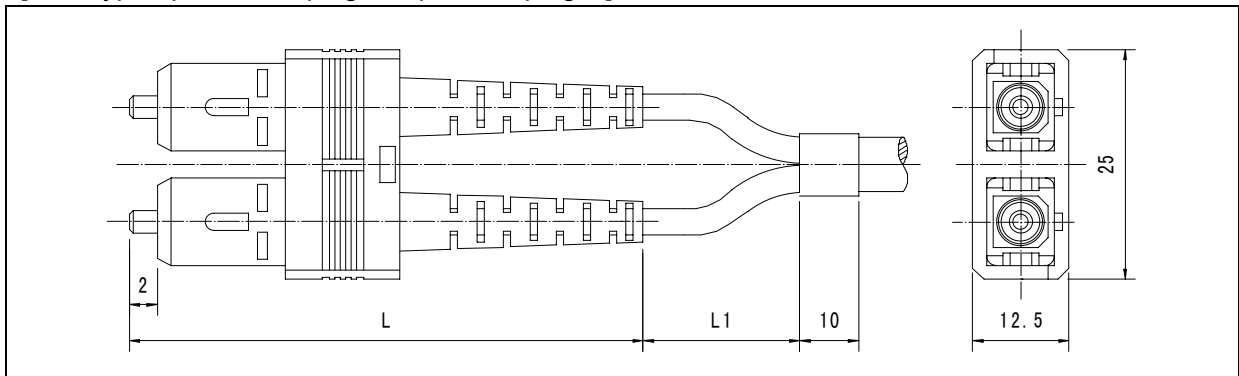
| Parameter | Plug | | | | Adapter |
|--|--|-----------|-----------|-----------|----------------------------|
| | SM | | | MM | |
| | PC | UPC | APC | PC | |
| Return Loss (dB) | ≥ 45 | ≥ 50 | ≥ 60 | ≥ 35 | / |
| Insertion Loss (dB) | ≤ 0.2 (Typical value), ≤ 0.3 (Maximum value) | | | | ≤ 0.1 (Typical value) |
| Repeatability (dB) | ≤ 0.1 | | | | / |
| Durability (cycles) | ≥ 500 | | | | ≥ 500 |
| Operating Temp. ($^{\circ}\text{C}$) | $-25 \sim +70$ | | | | $-25 \sim +70$ |
| Tensile Strength (N) | ≥ 90 ($\varphi 3$), ≥ 70 ($\varphi 2$). The requirement is not applicable to $\varphi 0.9$ | | | | / |

Outline dimensions

[SC type optical fiber plug]



[DSC type optical fiber plug (duplex SC plug)]



| Diameter of cable | L |
|-------------------|-------|
| φ0.9 | 39 |
| φ2 | 57 |
| φ3 | 67/50 |

Note: L1 is supplied according to customers' requirements



| | |
|---------------------------------|--|
| <p>SC type adapter (SC-A)</p> | <p>Technical drawing of the SC type adapter (SC-A). The side view shows a total width of 27.6 mm, a top section height of 15.5 mm, and a central section height of 13 mm. The bottom section has a width of 2 mm and a depth of 3 mm. The front view shows a total height of 22 mm, a top section height of 18 mm, a bottom section height of 9.5 mm, and a width of 7.4 mm. Two mounting holes are located at the bottom, each with a diameter of 2.2 mm (2 x φ 2.2).</p> |
| <p>DSC type adapter (DSC-A)</p> | <p>Technical drawing of the DSC type adapter (DSC-A). The side view shows a total width of 27.6 mm, a top section height of 28 mm, and a central section height of 25.4 mm. The bottom section has a width of 2 mm and a depth of 3 mm. The front view shows a total height of 34.5 mm, a top section height of 12.7 mm, a middle section height of 30.8 mm, a bottom section height of 9.5 mm, and a width of 7.4 mm. Two mounting holes are located at the bottom, each with a diameter of 2.2 mm (2 x φ 2.2).</p> |