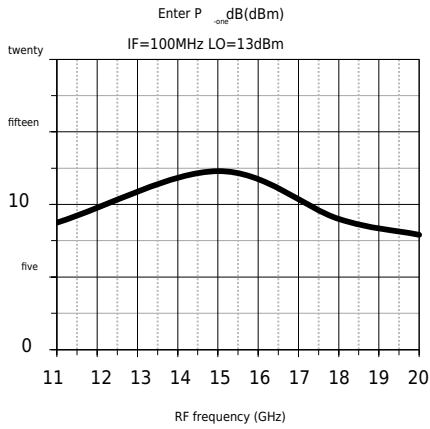


AY1264

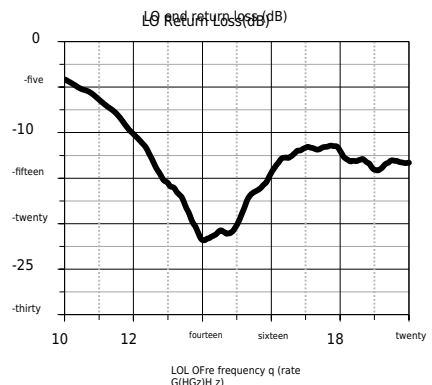
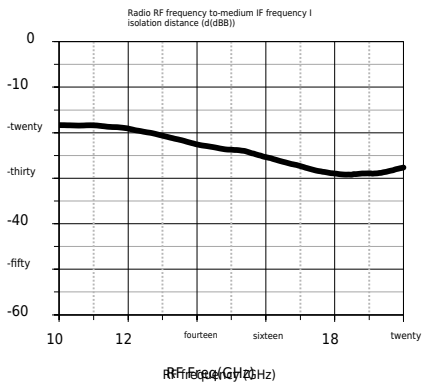
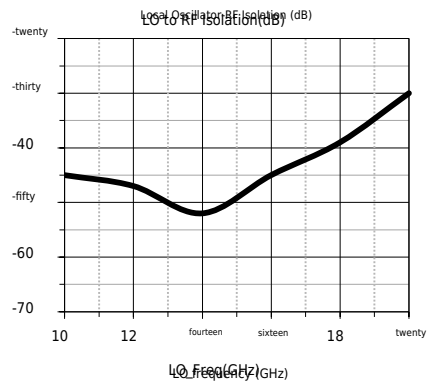
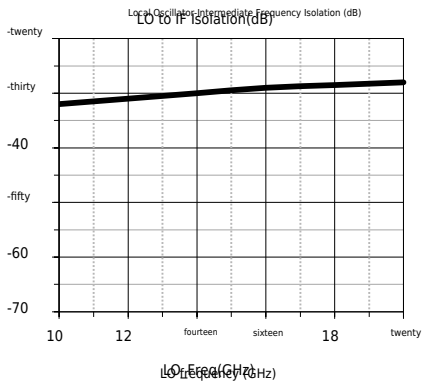
GaAs monolithic integrated passive double-balanced mixer chip

11~20GHz

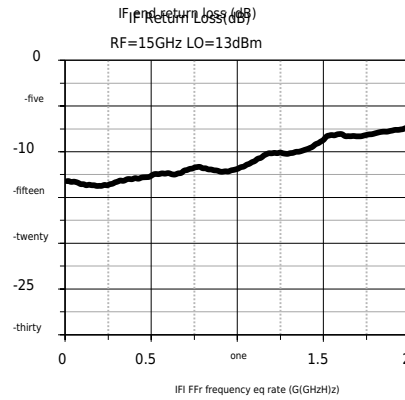
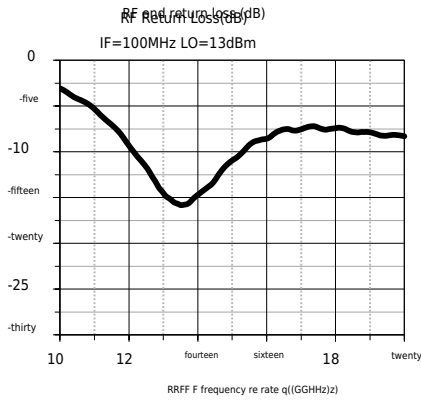


Typical test curve

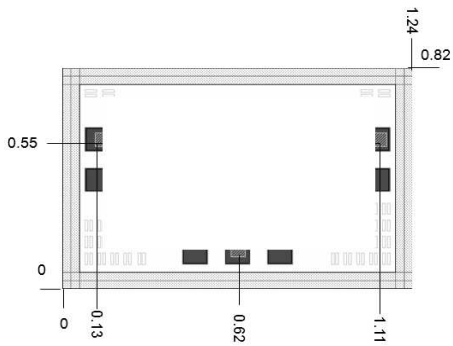
(Isolation)



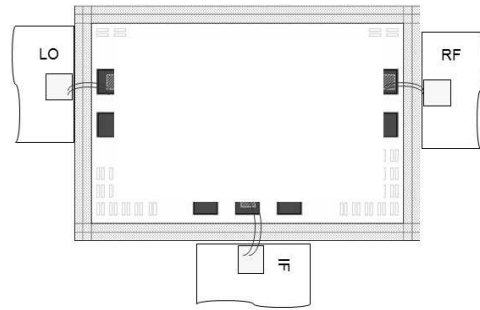
GaAs monolithic integrated passive double-balanced mixer chip
11~20GHz



Shape and port size (mm)



Recommended assembly drawing



Precautions

Gallium arsenide MMIC devices are susceptible to damage from electrostatic discharge. Precautions should be taken during transportation, assembly and testing.